

Market Intelligence Report 2013 Philadelphia

August 12, 2013 / By Chelsey Leffet, Jerod S. Byrd, MAI



Philadelphia's remarkable place in U.S. history dates back to 1682, when English entrepreneur William Penn founded the province that would come to be known as the "City of Brotherly Love." A century later, delegates from 13 colonies convened in Philadelphia for a series of congresses that would ultimately lead to the Declaration of Independence and the U.S. Constitution. Today, known as a seat of commerce, education, and culture, Philadelphia is the second-largest city on the East Coast and the sixth-largest metropolitan area in the U.S.

Philadelphia's hotel industry has realized improvement in the years since the recent recession and appears to be heading in a positive direction over the next several years.

Economy Update

The following table illustrates historical and projected employment, population, and income data for the overall Philadelphia market.

HISTORICAL & PROJECTED EMPLOYMENT, HOUSEHOLDS, POPULATION, AND HOUSEHOLD INCOME STATISTICS

Year	Total		Office		Industrial		Households	% Chg	Population	% Chg	Household	
	Employment	% Chg	Employment	% Chg	Employment	% Chg					Avg. Income	% Chg
2000	2,406,140	—	723,417	—	408,069	—	1,896,010	—	5,047,330	—	\$93,676	—
2001	2,396,930	(0.4) %	724,846	0.2 %	395,536	(3.1) %	1,906,500	0.6 %	5,066,550	0.4 %	94,655	1.0 %
2002	2,398,140	0.1	728,045	0.4	384,926	(2.7)	1,918,130	0.6	5,090,510	0.5	97,260	2.8
2003	2,387,760	(0.4)	736,575	1.2	366,396	(4.8)	1,929,660	0.6	5,114,620	0.5	101,496	4.4
2004	2,413,770	1.1	746,844	1.4	363,912	(0.7)	1,939,920	0.5	5,135,590	0.4	106,691	5.1
2005	2,433,560	0.8	753,277	0.9	359,608	(1.2)	1,948,980	0.5	5,153,640	0.4	110,091	3.2
2006	2,450,030	0.7	764,809	1.5	353,286	(1.8)	1,959,740	0.6	5,174,940	0.4	117,778	7.0
2007	2,464,330	0.6	769,318	0.6	351,841	(0.4)	1,971,310	0.6	5,195,840	0.4	122,873	4.3
2008	2,438,600	(1.0)	760,192	(1.2)	341,762	(2.9)	1,981,750	0.5	5,221,460	0.5	125,684	2.3
2009	2,362,470	(3.1)	737,445	(3.0)	318,348	(6.9)	1,991,930	0.5	5,252,580	0.6	121,814	(3.1)
2010	2,372,830	0.4	738,844	0.2	316,363	(0.6)	2,001,360	0.5	5,275,610	0.4	125,989	3.4
2011	2,373,900	0.0	736,701	(0.3)	316,461	0.0	2,010,060	0.4	5,291,380	0.3	129,143	2.5
2012	2,379,430	0.2	743,169	0.9	315,310	(0.4)	2,017,650	0.4	5,310,820	0.4	132,621	2.7
Forecasts												
2013	2,407,170	1.2 %	753,441	1.4 %	315,252	(0.0) %	2,028,660	0.5 %	5,327,770	0.3 %	\$137,167	3.4 %
2014	2,464,390	2.4	774,900	2.8	320,164	1.6	2,043,230	0.7	5,344,680	0.3	145,169	5.8
2015	2,530,810	2.7	798,729	3.1	326,156	1.9	2,059,460	0.8	5,359,640	0.3	153,001	5.4
2016	2,578,410	1.9	815,628	2.1	329,735	1.1	2,074,460	0.7	5,373,370	0.3	159,623	4.3
2017	2,598,240	0.8	822,750	0.9	329,332	(0.1)	2,086,840	0.6	5,385,050	0.2	164,788	3.2
Average Annual Compound Change												
2000 - 2012	(0.1) %		0.2 %		(2.1) %		0.5 %		0.4 %		2.9 %	
2000 - 2007	0.3		0.9		(2.1)		0.6		0.4		4.0	
2007 - 2010	(1.3)		(1.3)		(3.5)		0.5		0.5		0.8	
2010 - 2012	0.1		0.3		(0.2)		0.4		0.3		2.6	
Forecast 2012 - 2017	1.8 %		2.1 %		0.9 %		0.7 %		0.3 %		4.4 %	

Source: REIS Report, 4th Quarter, 2012

For the Philadelphia market, of the roughly 2,400,000 persons employed, 31% work in offices and are categorized as office employees, while 13% are categorized as industrial employees. Total employment decreased by an average annual compound rate of -1.3% during the recession of 2007 to 2010, followed by an improvement of 0.1% from 2010 to 2012. By comparison, office employment reflected compound change rates of -1.3% and 0.3% during the same respective periods. Total employment is expected to expand by 1.2% in 2013, while office employment is forecast to expand by 1.4% in 2013. Forecasts for the 2012 through 2017 period anticipate total employment will improve at an average annual compound rate of 1.8%, and office employment is forecast to improve by 2.1% on average annually during the same time frame.

Summary

Unemployment in Philadelphia remains high, though the city's broad economic base continues to slowly recover. RevPAR levels for Philadelphia hotels are expected to strengthen in the near term, with demand outpacing recent supply additions.

4 Comments

FILED UNDER CATEGORIES

Economic Trends and Cycles

North America

The number of households is forecast to improve by 0.7% on average annually between 2012 and 2017. Population is forecast to expand during this same period at an average annual compounded rate of 0.3%. Household average income is forecast to grow by 4.4% on average annually between 2012 and 2017.

The following table illustrates unemployment statistics for Philadelphia, the MSA, the state of Pennsylvania, and the U.S. from 2002 to 2011.

UNEMPLOYMENT STATISTICS				
Year	City	MSA	State	U.S.
2002	6.7 %	5.9 %	5.7 %	5.8 %
2003	7.2	6.4	6.1	6.0
2004	6.6	5.9	5.6	5.5
2005	5.8	5.2	5.1	5.1
2006	4.8	4.4	4.3	4.6
2007	4.2	3.9	3.8	4.6
2008	5.3	4.9	4.8	5.8
2009	9.0	8.3	8.1	9.3
2010	9.9	9.0	8.9	9.6
2011	9.1	8.3	8.3	9.0
<i>Recent Month - Dec</i>				
2011	8.8 %	7.9 %	7.7 %	8.5 %
2012	8.0	7.4	7.5	7.8

* Letters shown next to data points (if any) reflect revised population controls and/or model re-estimation implemented by the BLS.

Source: U.S. Bureau of Labor Statistics

The economic base of Philadelphia is largely supported by the education and healthcare sectors. The School District of Philadelphia is the area's largest employer, and the University of Pennsylvania has an undergraduate body of nearly 10,000 students from around the nation and the globe. Admissions are among the most rigorous in the country, and the university consistently ranks among the top-ten nationwide in the annual U.S. News & World Report survey.

The healthcare industry also serves as a major economic force and hotel demand generator for Philadelphia. In 1995, Thomas Jefferson University and the Main Line Health System signed an agreement establishing a new non-profit entity known as the Jefferson Health System (JHS). Since then, other established networks have joined JHS as founding members, including the Einstein Healthcare Network, Frankford Health Care Systems, and Magee Rehabilitation Hospital. Other healthcare cornerstones include the University of Pennsylvania Health System, the Children's Hospital of Philadelphia, and Independence Blue Cross, which is the region's largest health insurer. The breadth of economic anchors in Philadelphia and the city's growing population are expected to bolster the area's economy and buoy its rebound from the recent downturn.

Office Space Market Update

The following table illustrates office space statistics across Philadelphia's major submarkets; these statistics are among the best indicators of a market's propensity to attract commercial hotel demand.

OFFICE SPACE STATISTICS – MARKET OVERVIEW

Submarket	Inventory		Occupied Office Space	Vacancy Rate	Average Asking Lease Rate
	Buildings	Square Feet			
1 Center City	142	38,784,000	35,060,700	9.6 %	\$26.69
2 Exton/Malvern	111	5,448,000	4,451,000	18.3	22.90
3 Camden/Gloucester	105	5,941,000	4,806,300	19.1	19.78
4 Burlington	127	8,471,000	6,954,700	17.9	20.96
5 North Philadelphia	35	3,668,000	3,092,100	15.7	20.75
6 West Philadelphia	18	4,027,000	3,729,000	7.4	30.08
7 Bucks County	124	5,795,000	4,589,600	20.8	23.29
8 Delaware County	105	5,859,000	5,138,300	12.3	25.59
9 South Chester	119	6,964,000	5,905,500	15.2	25.13
10 Lower Merion	62	5,170,000	4,410,000	14.7	31.75
11 King of Prussia	78	6,000,000	4,980,000	17.0	22.97
12 Horsham	76	4,981,000	3,745,700	24.8	21.34
13 Jenkintown	31	1,847,000	1,472,100	20.3	20.43
14 N Montgomery Cnty	53	2,704,000	2,233,500	17.4	21.53
15 Blue Bell/Plymouth	105	5,926,000	4,610,400	22.2	24.66
Totals and Averages	1,291	111,585,000	95,178,900	14.7 %	\$24.76

Source: REIS Report, 4th Quarter, 2012

The greater Philadelphia market comprises a total of 111.6 million square feet of office space. For the fourth quarter of 2012, the market reported an average vacancy rate of 14.7% and an average asking rent of \$24.76. Vacancy rates in the submarkets of Center City and West Philadelphia fell well below the market-wide average; average asking rents in these two submarkets were also higher than the average asking lease rates of the other Philadelphia submarkets, aside from Lower Merion.

The following table illustrates historical and projected office space statistics for the overall Philadelphia market.

HISTORICAL AND PROJECTED OFFICE SPACE STATISTICS – GREATER MARKET

Philadelphia Market							
Year	Available Office Space	% Chg	Occupied Office Space	% Chg	Vacancy Rate	Asking Lease Rate	% Chg
2000	102,453,000	—	94,529,000	—	7.7 %	\$22.21	—
2001	104,160,000	1.7 %	92,537,000	(2.1) %	11.2	22.47	1.2 %
2002	104,622,000	0.4	91,542,000	(1.1)	12.5	22.48	0.0
2003	106,179,000	1.5	91,391,000	(0.2)	13.9	22.13	(1.6)
2004	108,690,000	2.4	92,554,000	1.3	14.8	21.85	(1.3)
2005	109,347,000	0.6	94,096,000	1.7	13.9	21.86	0.0
2006	109,301,000	(0.0)	95,300,000	1.3	12.8	22.28	1.9
2007	110,395,000	1.0	97,924,000	2.8	11.3	23.17	4.0
2008	111,158,000	0.7	97,696,000	(0.2)	12.1	24.04	3.8
2009	111,388,000	0.2	96,083,000	(1.7)	13.7	24.07	0.1
2010	110,834,000	(0.5)	94,006,000	(2.2)	15.2	24.17	0.4
2011	111,598,000	0.7	94,511,000	0.5	15.3	24.43	1.1
2012	111,585,000	(0.0)	95,178,000	0.7	14.7	24.76	1.4
Forecasts							
2013	111,815,000	0.2 %	95,822,000	0.7 %	14.3 %	\$25.24	1.9 %
2014	112,393,000	0.5	96,693,000	0.9	14.0	25.91	2.7
2015	113,158,000	0.7	97,654,000	1.0	13.7	26.64	2.8
2016	114,354,000	1.1	99,070,000	1.5	13.4	27.46	3.1
2017	115,542,000	1.0	100,081,000	1.0	13.4	28.22	2.8
Average Annual Compound Change							
2000 - 2012		0.7 %		0.1 %			0.9 %
2000 - 2007		1.1		0.5			0.6
2007 - 2010		0.1		(1.4)			1.4
2010 - 2012		0.3		0.6			1.2
Forecast 2012 - 2017		0.7 %		1.0 %			2.7 %

Source: REIS Report, 4th Quarter, 2012

The inventory of office space in the Philadelphia market increased at an average annual compound rate of 0.7% from 2000 through 2012, while occupied office space remained relatively stable at an average annual rate of 0.1% over the same period. During the period of 2000 through 2007, occupied office space expanded at an average annual compound rate of 0.5%. From 2007 through 2010, occupied office space contracted at an average annual compound rate of -1.4%, reflecting the impact of the recession. The onset of the recovery is evident in the 0.6% average annual change in occupied office space from 2010 to 2012. From 2012 through 2017, the inventory of occupied office space is forecast to increase at an average annual compound rate of 1.0%, with available office space expected to increase 0.7%; this would result in an anticipated vacancy rate of 13.4% as of 2017.

Hotel Construction Update

HVS research revealed nine new hotels in the pipeline for the Philadelphia market:

- W Hotel
- Element by Westin Hotel
- Marriott Hotel at the Navy Yard
- Homewood Suites University City Philadelphia
- Homewood Suites at Liberty Plaza
- Home2 Suites by Hilton
- Xfinity Live Hotel
- Franklin Place
- Hotel Monaco

The addition of the hotels listed above, as well as several other hotel projects now in the early stages of development in the greater Philadelphia market, should have only a minimal impact on the area's overall supply.

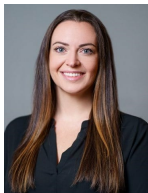
Outlook on Market Occupancy and Average Rate

Occupancy levels in the Philadelphia region are anticipated to strengthen moderately going forward, reflecting levels similar to pre-recession numbers over the course of the next several years as demand outpaces the additional room supply. Average rate is also forecast to strengthen year-over-year as hoteliers are continuing to renegotiate rates with corporate accounts; rates for groups and leisure visitors should also realize increases as the local and national economies continue to recover.

Conclusion

RevPAR levels for Philadelphia hotels should strengthen in the near term, particularly as existing hotels continue to drive room rate. HVS expects RevPAR to achieve a level around 5.0% over the course of the next two years, but then moderately drop off as economic conditions begin to normalize. The strengthening of Philadelphia's diverse businesses and demand base, coupled with its historical significance and an array of attractions, should allow for continued growth going forward.

About Chelsey Leffet



Chelsey Leffet is Managing Director and head of the Northeast region of the U.S. for the Consulting & Valuation division. Chelsey has consulted on hundreds of hotels throughout the Mid-Atlantic, including major Beltway markets. Prior to joining HVS, Chelsey worked in guest services, operations, and restaurant roles at ARAMARK Higher Education; Lighthouse Resort Services in Corolla, North Carolina; the Columbus Inn in Wilmington, Delaware; and the Bellmoor Inn and Spa in Rehoboth Beach, Delaware. Chelsey earned her BS in Hospitality Management and her MBA from East Carolina University. Chelsey resides in Washington, D.C and is a certified general appraiser. Contact Chelsey at (202) 434-8793, or [\[email protected\]](#).

About Jerod S. Byrd, MAI



Jerod Byrd, one of HVS' premier experts on hotel markets in the northeast, New England, and Mid-Atlantic regions, is Managing Director and Senior Partner for HVS Philadelphia. Jerod has been involved in thousands of hotel consulting and appraisal assignments at HVS, including market studies, feasibility studies, and valuations of existing and proposed hotels and portfolios throughout the Mid-Atlantic region and has been featured at various industry events. Jerod earned dual BBA degrees in Hospitality & Resort Management and Real Estate from The University of Memphis and is a state-certified appraiser and Member of the Appraisal Institute. Contact Jerod at (901) 481-3058, or [\[email protected\]](#).